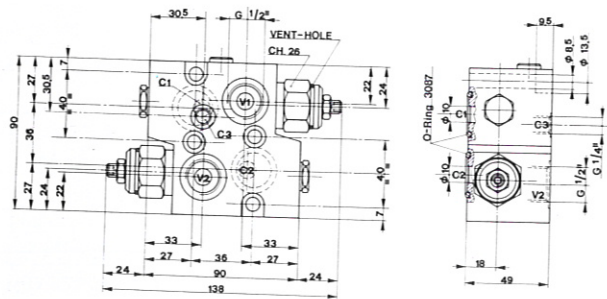


**DOUBLE COUNTERBALANCE VALVE, FOR LOCK AND MOTION CONTROL IN BOTH DIRECTIONS FOR FLANGE-MOUNTING ON DANFOSS OMP, OMR MOTORS, WITH SELECTOR VALVE FOR BRAKE OPENING**



**TO ORDER**

**VBO48 F.MD.I.SE.CH/1 1 A X 04B**

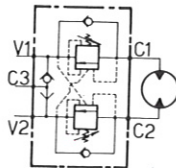
1 2 3 4 5

- 1) Valve code
- 2) Pilot ratio: standard 1 = 10:1  
on request - 2 = 7:1 / 3 = 3.5:1
- 3) Adjustment type A = standard
- 4) Required calibration pressure = X (see table)
- 5) Manifold size = 04B

**Q max 50 l/min**

**P max 250 bar**

Note: specify if for open or closed-centre configuration



CODICE MOLLA SPRING CODE	CAMPO TARAT. / PRESS. RANGE min - max (bar)
X	30 ÷ 210
Y	100 ÷ 350

GRANDEZZA SIZE	TIPO DI ATTACCO / PORT TYPE		
	C1-C2	V1-V2	C3
04B	Ø 10	G 1/2"	G 1/4"